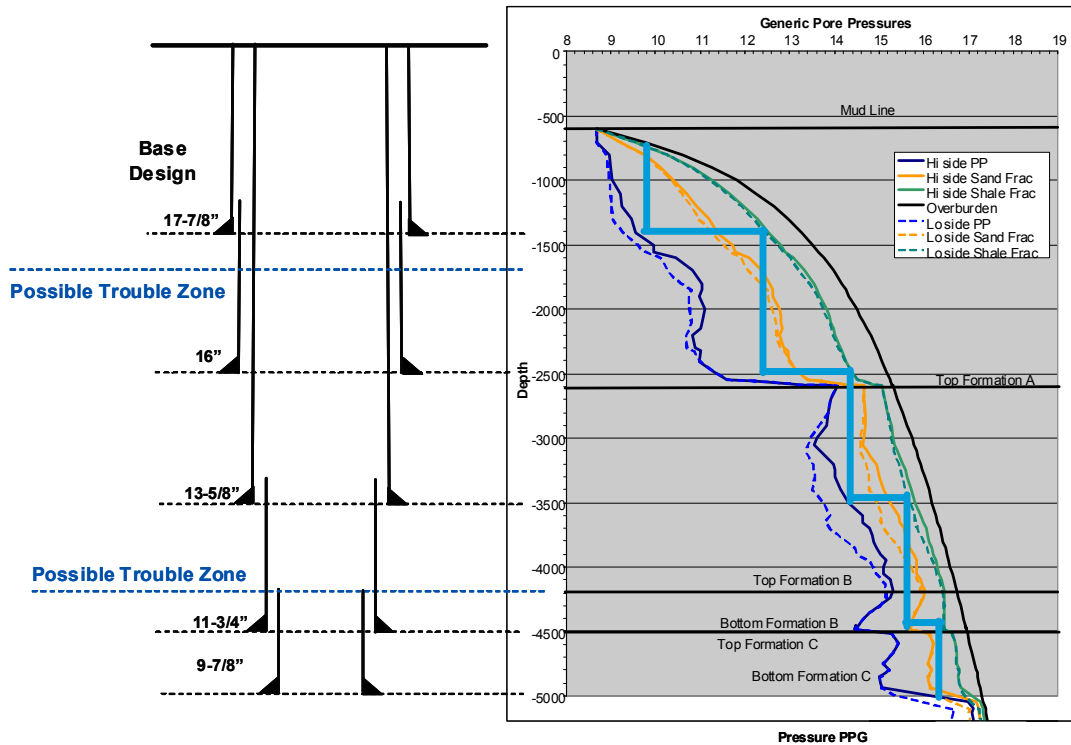




“It’s about the well, not the widget”



As an international service company, we are challenged every day with helping our clients discover new and better ways to extract hydrocarbons. Some of the challenges we face today are:

- Production from existing reservoirs is declining
- Quality of new reservoirs is decreasing
- Fewer new fields of significant size
- Exploration extending into more extreme environments
- New technologies needed to eliminate or reduce NPT

Therefore, our business strategy going forward demands that we pull together our resources meaning our people, best practices, equipment and technology, and offer our customers more comprehensive solutions to overcome today’s drilling problems.



“The industry is heading towards collaborative partnerships between service companies and operators. It’s no longer acceptable to just ask for something to be delivered and installed in the wells. We have to understand exactly what the conditions are in the field-of-use so both sides can set the right expectations, work through the delivery processes and consider every risk element.”

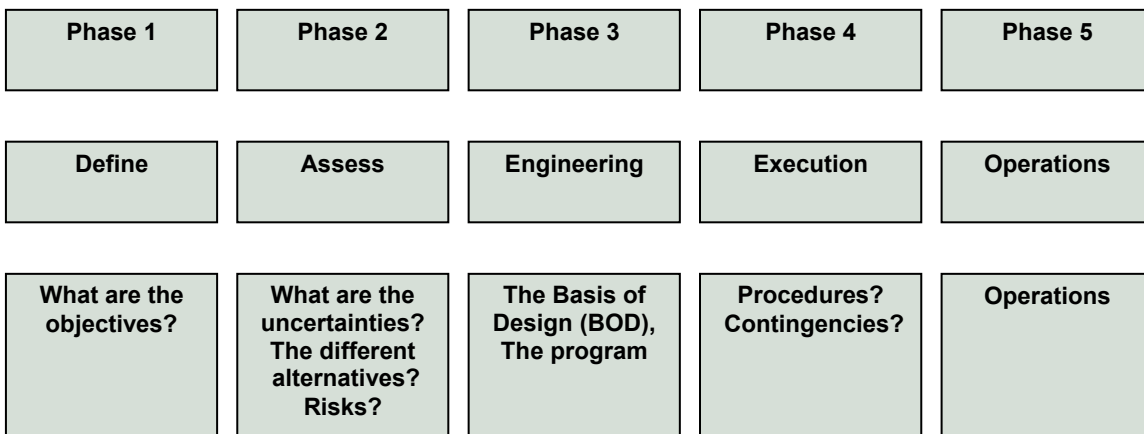
Keith R. Morley, Senior Vice President of Well Construction and Operations Support, Chief Safety Officer, January/February 2008 issue of Drilling Contractor

With this objective in mind, the **Drilling Hazard Mitigation Group** is leveraging the resources of the following product lines; Solid Expandable Systems, Controlled Pressure Drilling and Testing Services, and Drilling with Casing/Drilling with Liners.

From a drilling engineering perspective, we can no longer only rely on conventional drilling programs to navigate these complex reservoir scenarios. Well engineering is now a much more dynamic process whereby we must spend more time assessing the risks up front and planning how we will mitigate each of them using good drilling practices and all the new technologies available to us in the Weatherford toolbox.

How do we do this? First of all, we need to understand better how the operator approaches their projects. Secondly, we need to become more involved with the customer during the early phases of the well planning process so that we can gather the pertinent data in order to design, qualify and offer smart solutions and have the services ready to deploy. During all our communications with the customer, we are in reality teaching them how to apply our new technologies in order to mitigate the inherent risks encountered during the drilling and completion of complex reservoirs.

The Typical Operator Well Planning Process





Weatherford®

Fort Worth Training Center

With that mission in mind, Solid Expandable Systems partnered with the experts of Successful Energy Practices International to develop two new training courses, the 5-day **Drilling Fundamentals** training course and the 7-day **Drilling Hazards Management** training course. These two courses are unique in that they focus on understanding the operator's perspective, their requirements and the risk assessment process. With this approach to training, we will bolster our ability to provide and communicate value propositions more effectively by maximizing existing synergies within the DHM product lines. It is the collaboration between these product lines which will unlock our potential for introducing our new technologies into the marketplace, and thereby establish our reputation as a proactive provider of solutions.



The 7-day **Drilling Hazards Management** training course is taught in a workshop format with the follow objectives:

- Weatherford personnel will understand our customers' Well Planning Process.
- Participants will be provided with tools to deal confidently with operator engineering staff when discussing their drilling challenges.
- Participants will understand well problems and understand the fundamentals of drilling hazards.
- Participants will understand the fundamentals of our customers' risk management process.
- Participants will have the ability to understand and apply key Weatherford Technologies to mitigate drilling hazards where appropriate.



Weatherford®

Fort Worth Training Center

- Weatherford personnel must gain the knowledge required to achieve credibility with operator personnel.
- Participants will understand operators' problems and how to better achieve Weatherford's goals.

These two courses, **Drilling Fundamentals** and **Drilling Hazards Management**, were delivered at the Fort Worth training center during the first and second week of June. Both courses are undergoing improvement in order to incorporate the constructive feedback gathered from the students and instructors. If you are interested in scheduling your employees for this training, please contact either:

Pat York

Director of Commercialization & Marketing, Solid Expandable Systems

Weatherford International
9600 W Gulf Bank Road
Houston, Texas 77040
Office: 832-590-4155
Email: pat.york@weatherford.com

or...

Michael Harvey

Global Technical Specialist, Solid Expandables Systems

Weatherford International
9600 W Gulf Bank Road
Houston, Texas 77040
Office: 832-590-4152
Email: michael.harvey@weatherford.com

Posted on June 30, 2008 by:

Johanna Dixon

Weatherford International
Office: 713-983-5201
Email: johanna.dixon@weatherford.com